

# Outer Dowsing Offshore Wind

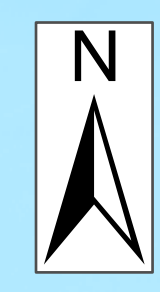
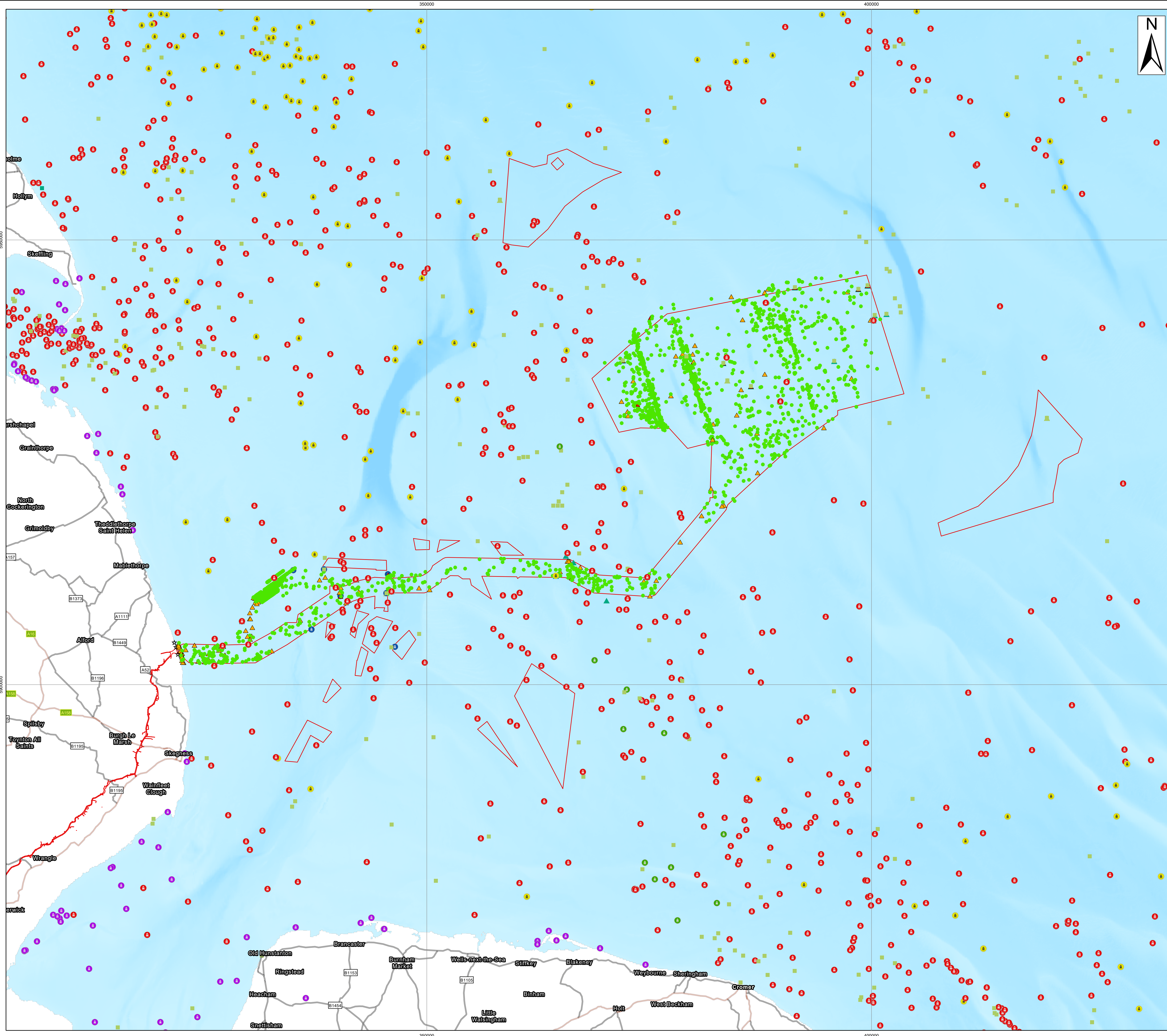
## Plans

### 2.14 Historic Environment Plan Offshore

Date: September 2024

Document Reference: 2.14  
Pursuant to APFP Regulation: 5(2)(m)  
Rev: 3.0

Company:	<b>Outer Dowsing Offshore Wind</b>			Asset:	<b>Whole Asset</b>	
Project:	<b>Whole Wind Farm</b>			Sub Project/Package:	Whole Asset	
Document Title or Description:	2.14 Historic Environment Plan Offshore					
Internal Document Number:	PP1-ODOW-DEV-CS-PLN-0024_03			3 <sup>rd</sup> Party Doc No (If applicable):	N/A	
<b>Rev No.</b>	<b>Date</b>	<b>Status / Reason for Issue</b>	<b>Author</b>	<b>Checked by</b>	<b>Reviewed by</b>	<b>Approved by</b>
1.0	March 2024	DCO Application	Outer Dowsing	Shepherd & Wedderburn	Outer Dowsing	Outer Dowsing
2.0	July 2024	Response to Section 51 Advice	Outer Dowsing	Shepherd & Wedderburn	Outer Dowsing	Outer Dowsing
3.0	September 2024	Procedural Deadline 19 September	Outer Dowsing	Shepherd & Wedderburn	Outer Dowsing	Outer Dowsing

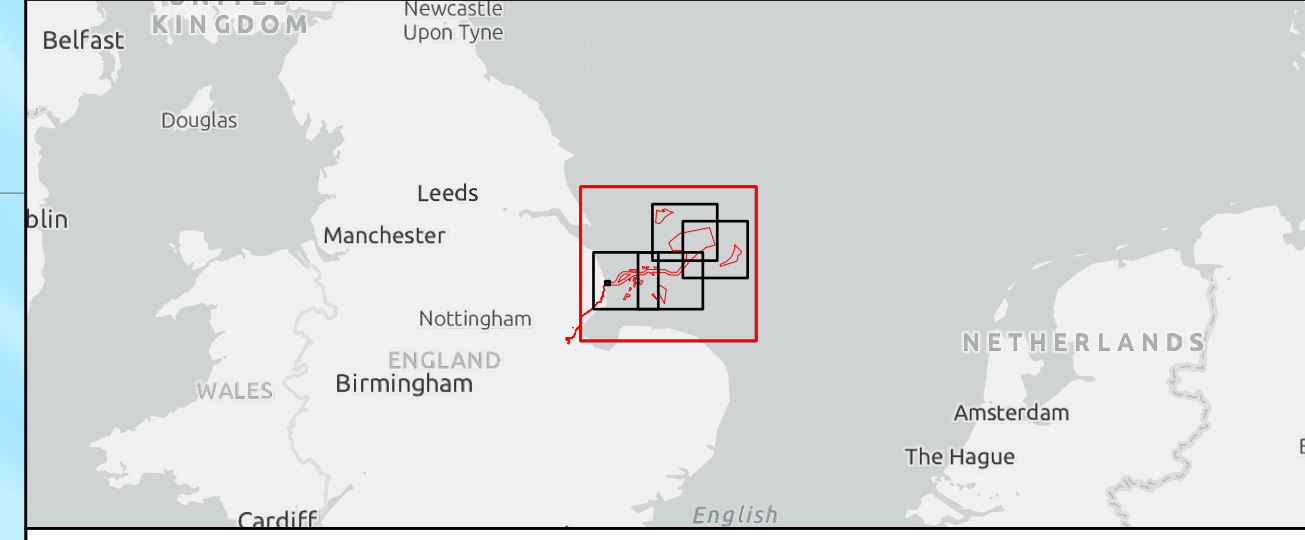


- Legend**
- Order Limits
  - Wrecks & Obstructions (UKHO)**
  - Dangerous wreck
  - Non-dangerous wreck
  - Distributed remains of wreck
  - Wreck showing any portion of hull or superstructure
  - Other obstruction
  - Foul area/ground
  - Archaeological Anomalies - Magnetometer**
  - ▲ High Potential
  - ▲ Medium Potential
  - Low Potential
  - MA AEZ**
  - Wreck
  - ▲ Obstruction
  - ▲ Foul
  - ☆ Find

Source:  
 Contains Esri UK, Esri, TomTom, Garmin, FAO, NOAA, USGS, Esri UK, Esri, TomTom, Garmin, Foursquare, METI/NASA, USGS.  
 Contains OS data @ Crown Copyright and database right 2022. All rights reserved.

Notes:	Status: Pre-examination update
--------	-----------------------------------

Offshore Coordinate System  
 Datum: WGS 1984  
 Spheroid: WGS 1984  
 Projection: UTM Zone 31N  
 Central Meridian: 3 E  
 Vertical Reference: LAT (Lowest Astronomical Tide)



**Outer Dowsing Offshore Wind**  
**2.14 - Historic Environment Plan Offshore V3**  
 DCO Application

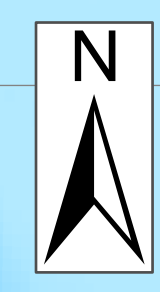
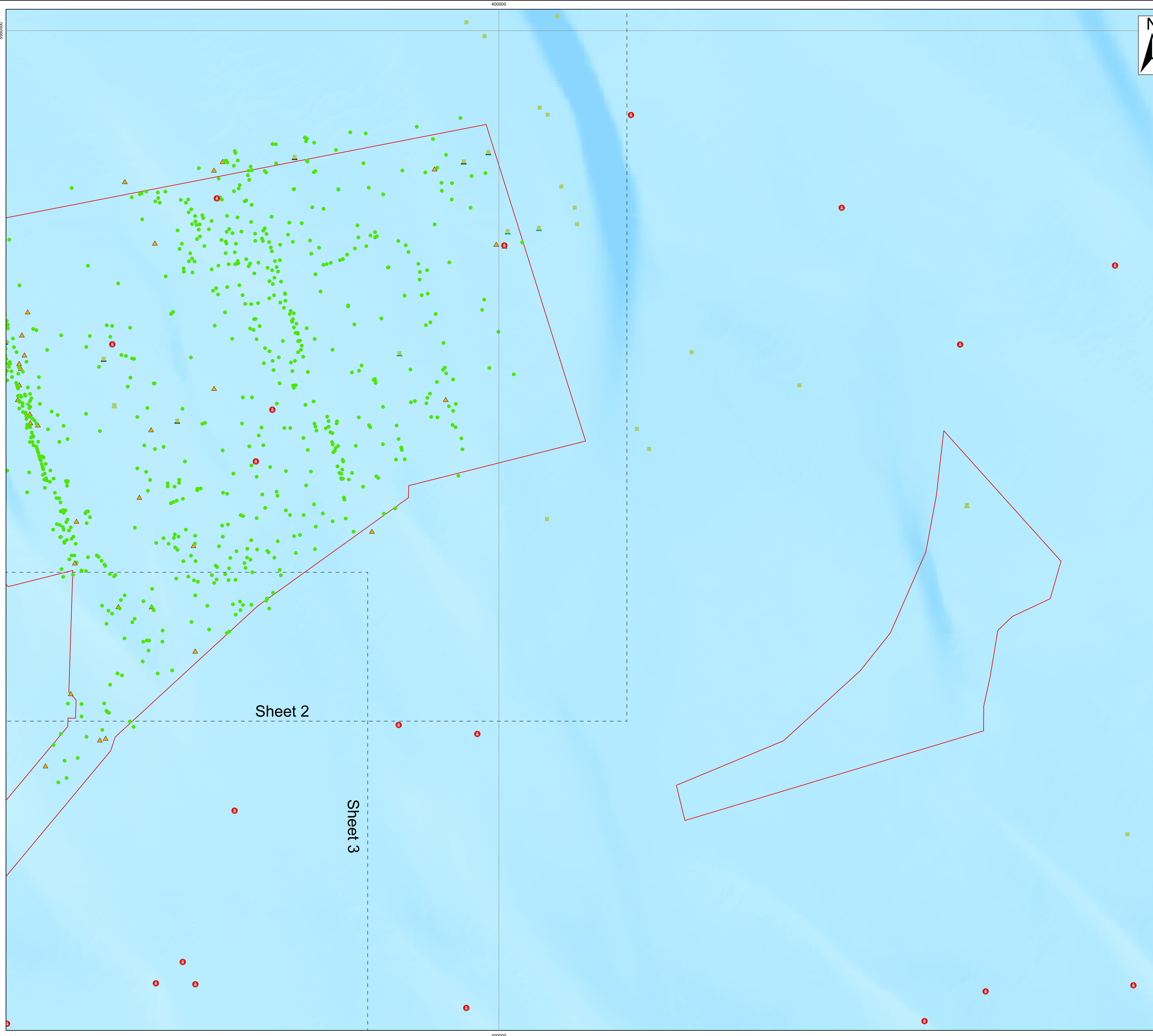
Drawing No: PP1-ODOW-DEV-CS-PLN-0024\_03

Drawing: Overview Sheet      Page Size: A1

Rev No:	Date	Description	Drawn	Checked	Approved
1.0	March 2024	DCO Application Issue	GC	ODOW	ODOW
2.0	June 2024	Response to Section 51 Advice	GC	ODOW	ODOW
3.0	Sept 2024	Response to Rule 17 Letter Dated 31 July 2024	GC	ODOW	ODOW



This document may only be used for the purpose for which it was commissioned and in accordance with the terms of engagement for that commission. Unauthorised use of this document in any form whatsoever is prohibited.

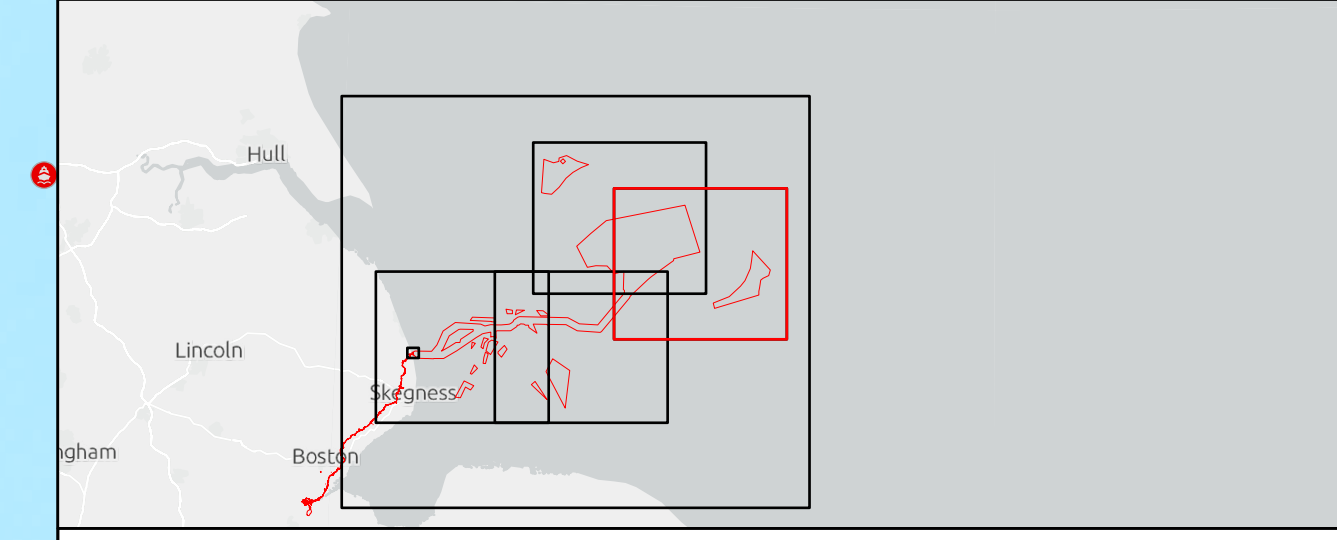
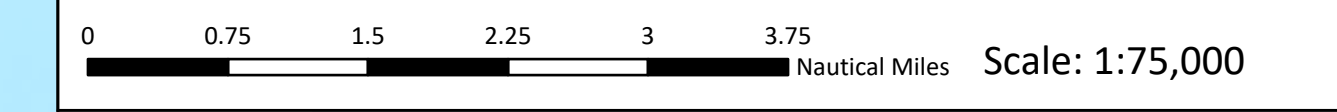


- Legend**
- Order Limits
  - Sheet Extent
- Wrecks & Obstructions (UKHO)**
- Dangerous wreck
  - Foul area/ground
- Archaeological Anomalies - Magnetometer**
- ▲ Medium Potential
  - Low Potential
- MA AEZ**
- Wreck
  - ▲ Obstruction
  - ▲ Foul

Source:  
 Contains Esri UK, Esri, TomTom, Garmin, Foursquare, GeoTechnologies, Inc, METI/NASA, USGS, Esri UK, Esri, TomTom, Garmin, FAO, NOAA, USGS. Contains OS data @ Crown Copyright and database right 2022. All rights reserved.

Notes:	Status: Pre-examination update
--------	-----------------------------------

Offshore Coordinate System  
 Datum: WGS 1984  
 Spheroid: WGS 1984  
 Projection: UTM Zone 31N  
 Central Meridian: 3 E  
 Vertical Reference: LAT (Lowest Astronomical Tide)



**Outer Dowsing Offshore Wind**  
**2.14 - Historic Environment Plan Offshore V3**  
 DCO Application

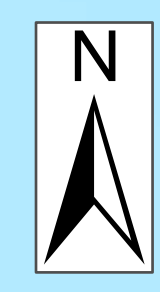
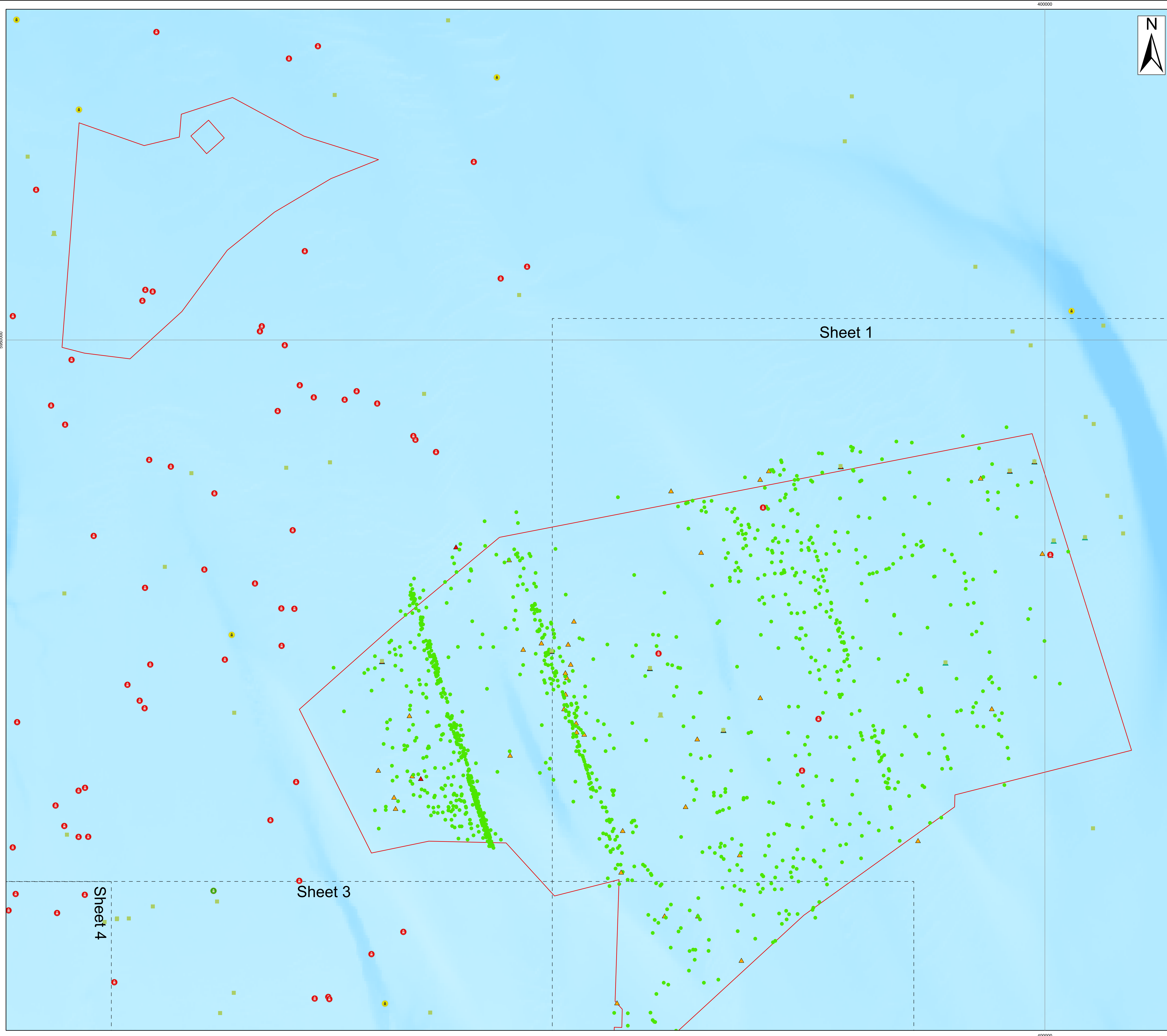
Drawing No: PP1-ODOW-DEV-CS-PLN-0024\_03

Drawing: 1 of 5 Page Size: A1

Rev No:	Date	Description	Drawn	Checked	Approved
1.0	March 2024	DCO Application Issue	GC	ODOW	ODOW
2.0	June 2024	Response to Section 51 Advice	GC	ODOW	ODOW
3.0	Sept 2024	Response to Rule 17 Letter Dated 31 July 2024	GC	ODOW	ODOW



This document may only be used for the purpose for which it was commissioned and in accordance with the terms of engagement for that commission. Unauthorised use of this document in any form whatsoever is prohibited.

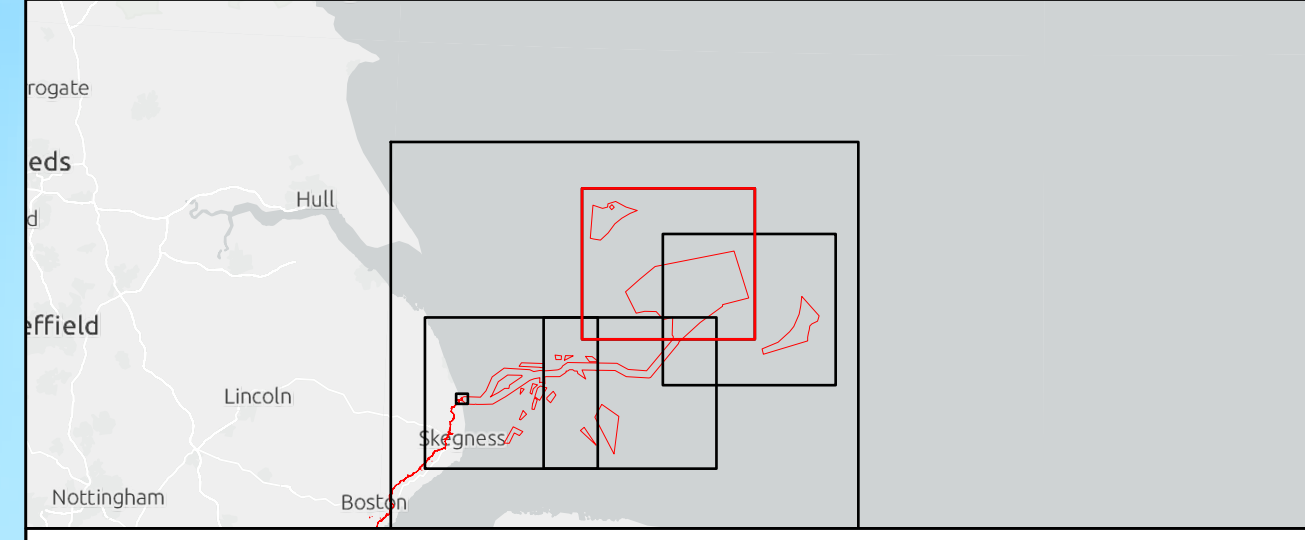
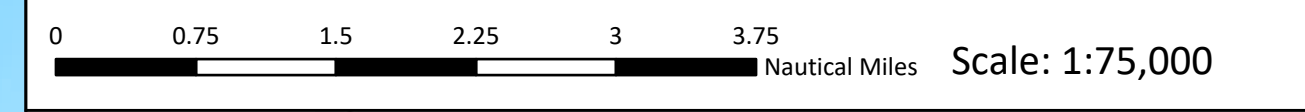


- Legend**
- Order Limits
  - Sheet Extent
- Wrecks & Obstructions (UKHO)**
- Dangerous wreck
  - Non-dangerous wreck
  - Distributed remains of wreck
  - Foul area/ground
- Archaeological Anomalies - Magnetometer**
- ▲ Medium Potential
  - Low Potential
- MA AEZ**
- Wreck
  - ▲ Obstruction
  - ▲ Foul

Source:  
 Contains Esri UK, Esri, TomTom, Garmin, Foursquare, GeoTechnologies, Inc, METI/NASA, USGS, Esri UK, Esri, TomTom, Garmin, FAO, NOAA, USGS. Contains OS data @ Crown Copyright and database right 2022. All rights reserved.

Notes:	Status: Pre-examination update
--------	-----------------------------------

Offshore Coordinate System  
 Datum: WGS 1984  
 Spheroid: WGS 1984  
 Projection: UTM Zone 31N  
 Central Meridian: 3 E  
 Vertical Reference: LAT (Lowest Astronomical Tide)



**Outer Dowsing Offshore Wind  
 2.14 - Historic Environment Plan Offshore V3  
 DCO Application**

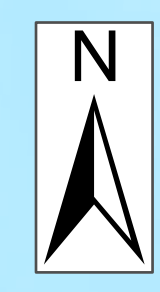
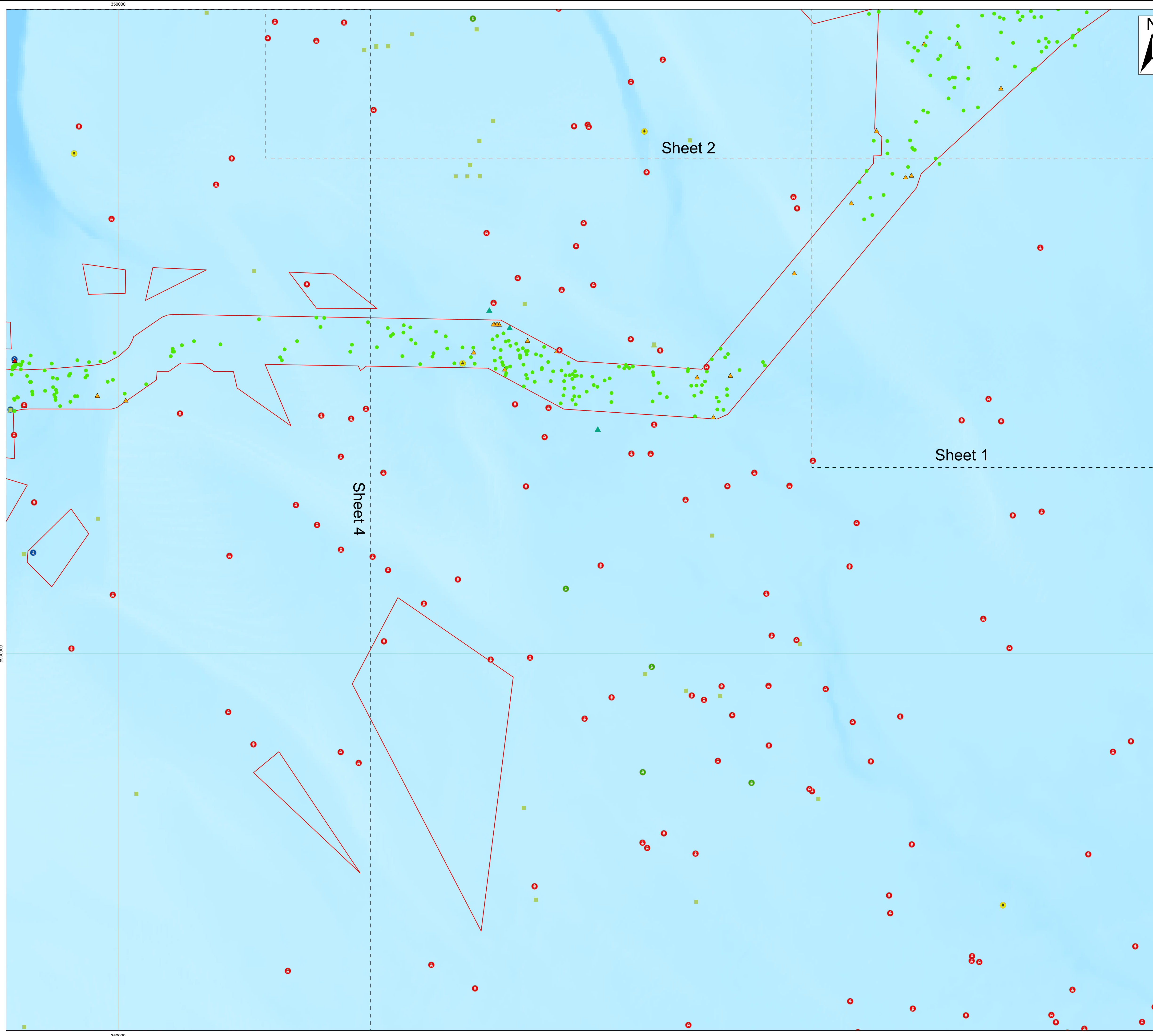
Drawing No: PP1-ODOW-DEV-CS-PLN-0024\_03

Drawing: 2 of 5 Page Size: A1

Rev No:	Date	Description	Drawn	Checked	Approved
1.0	March 2024	DCO Application Issue	GC	ODOW	ODOW
2.0	June 2024	Response to Section 51 Advice	GC	ODOW	ODOW
3.0	Sept 2024	Response to Rule 17 Letter Dated 31 July 2024	GC	ODOW	ODOW



This document may only be used for the purpose for which it was commissioned and in accordance with the terms of engagement for that commission. Unauthorised use of this document in any form whatsoever is prohibited.

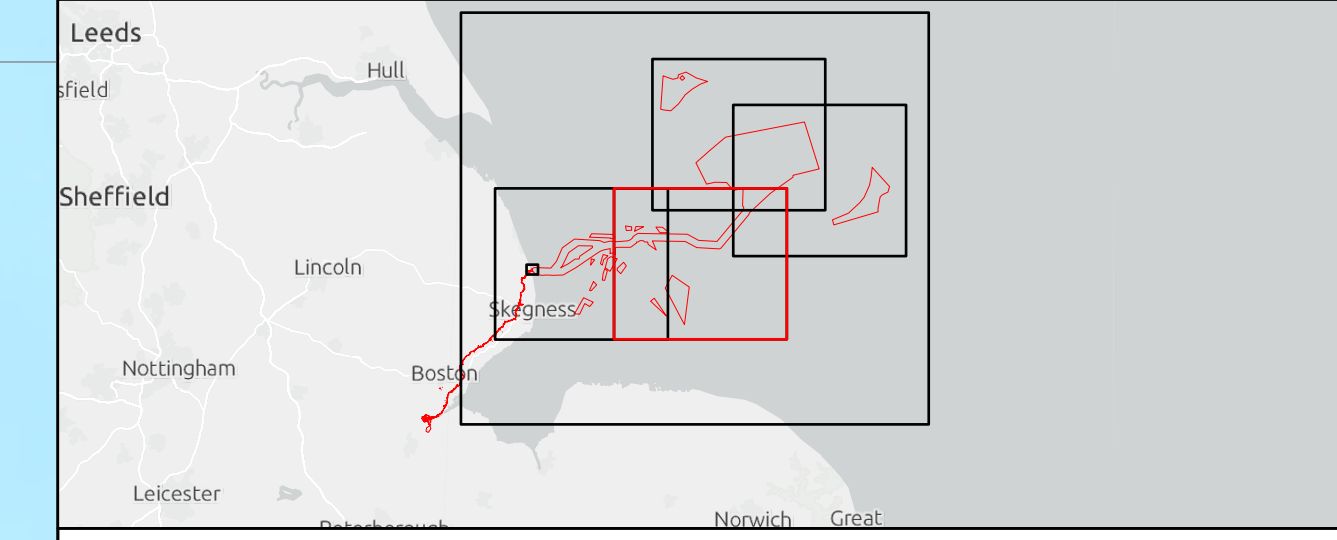
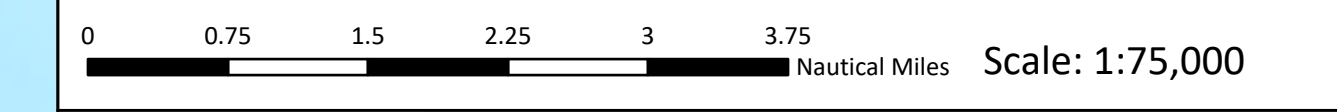


- Legend**
- Order Limits
  - Sheet Extent
- Wrecks & Obstructions (UKHO)**
- Dangerous wreck
  - Non-dangerous wreck
  - Distributed remains of wreck
  - Foul area/ground
- Archaeological Anomalies - Magnetometer**
- ▲ High Potential
  - ▲ Medium Potential
  - Low Potential
- MA AEZ**
- Wreck
  - ▲ Obstruction
  - ▲ Foul

Source:  
 Contains Esri UK, Esri, TomTom, Garmin, Foursquare, GeoTechnologies, Inc, METI/NASA, USGS, Esri UK, Esri, TomTom, Garmin, FAO, NOAA, USGS. Contains OS data @ Crown Copyright and database right 2022. All rights reserved.

Notes:	Status: Pre-examination update
--------	-----------------------------------

Offshore Coordinate System  
 Datum: WGS 1984  
 Spheroid: WGS 1984  
 Projection: UTM Zone 31N  
 Central Meridian: 3 E  
 Vertical Reference: LAT (Lowest Astronomical Tide)



**Outer Dowsing Offshore Wind**  
**2.14 - Historic Environment Plan Offshore V3**  
 DCO Application

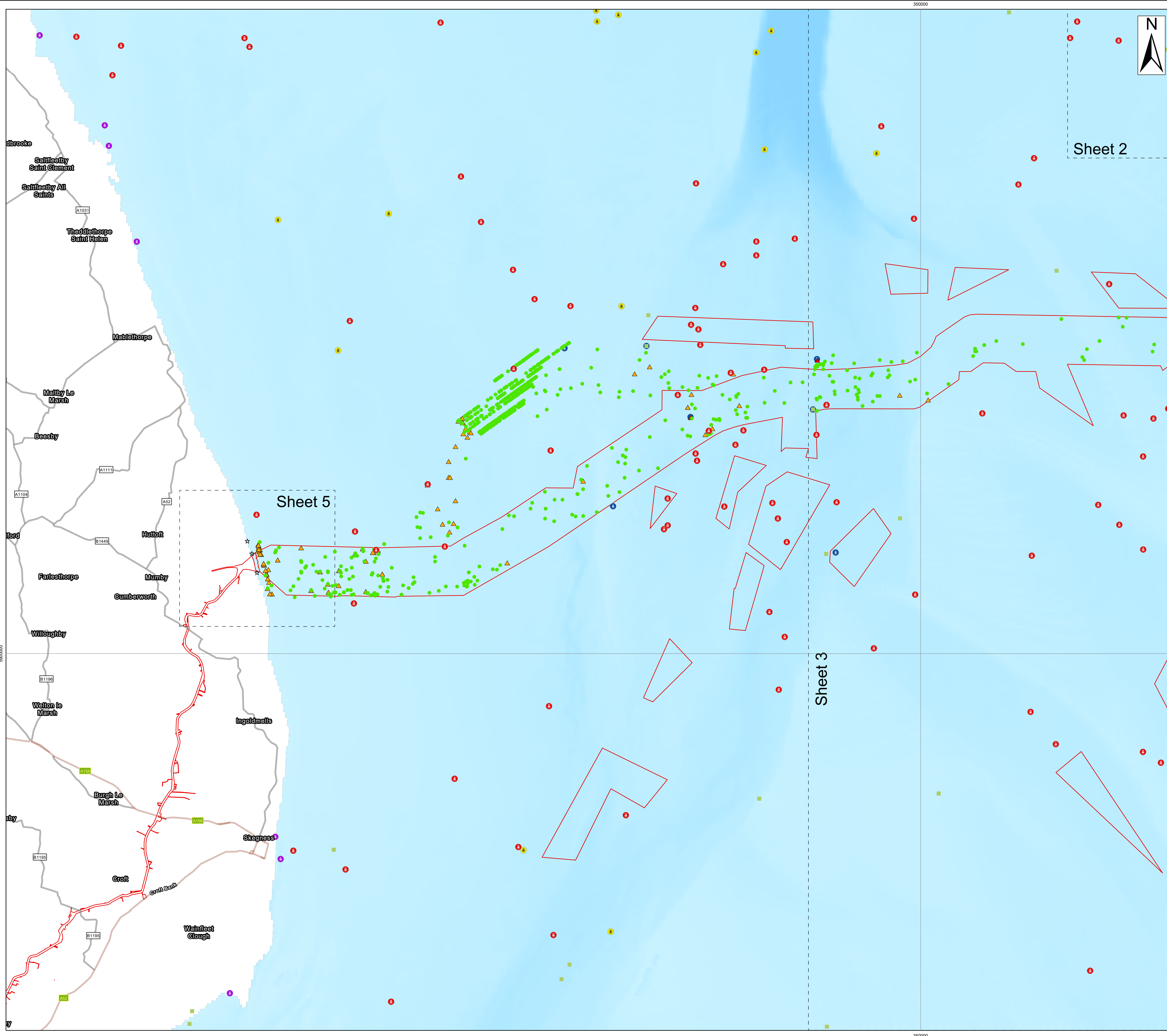
Drawing No: PP1-ODOW-DEV-CS-PLN-0024\_03

Drawing: 3 of 5 Page Size: A1

Rev No:	Date	Description	Drawn	Checked	Approved
1.0	March 2024	DCO Application Issue	GC	ODOW	ODOW
2.0	June 2024	Response to Section 51 Advice	GC	ODOW	ODOW
3.0	Sept 2024	Response to Rule 17 Letter Dated 31 July 2024	GC	ODOW	ODOW



This document may only be used for the purpose for which it was commissioned and in accordance with the terms of engagement for that commission. Unauthorised use of this document in any form whatsoever is prohibited.

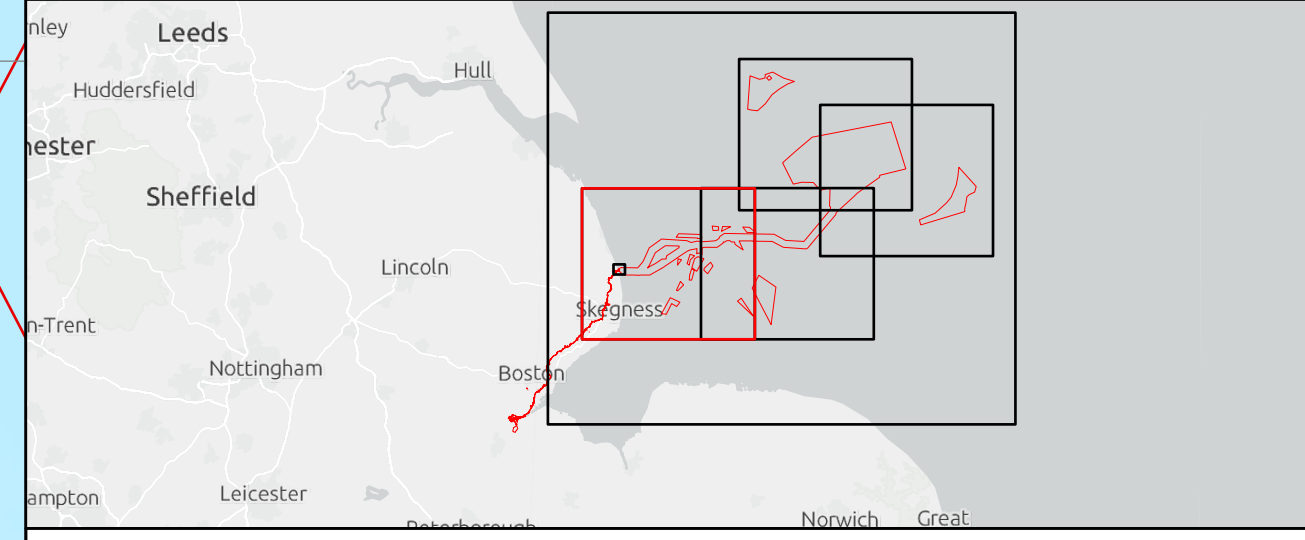


- Legend**
- Order Limits
  - Sheet Extent
- Wrecks & Obstructions (UKHO)**
- Dangerous wreck
  - Non-dangerous wreck
  - Wreck showing any portion of hull or superstructure
  - Foul area/ground
- Archaeological Anomalies - Magnetometer**
- ▲ High Potential
  - ▲ Medium Potential
  - Low Potential
- MA AEZ**
- Wreck
  - ★ Find

Source:  
 Contains Esri UK, Esri, TomTom, Garmin, Foursquare, GeoTechnologies, Inc, METI/NASA, USGS, Esri UK, Esri, TomTom, Garmin, FAO, NOAA, USGS. Contains OS data @ Crown Copyright and database right 2022. All rights reserved.

Notes:	Status: Pre-examination update
--------	-----------------------------------

Offshore Coordinate System  
 Datum: WGS 1984  
 Spheroid: WGS 1984  
 Projection: UTM Zone 31N  
 Central Meridian: 3 E  
 Vertical Reference: LAT (Lowest Astronomical Tide)



**Outer Dowsing Offshore Wind**  
**2.14 - Historic Environment Plan Offshore V3**  
 DCO Application

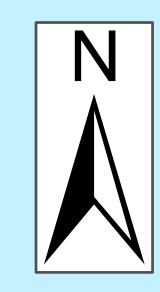
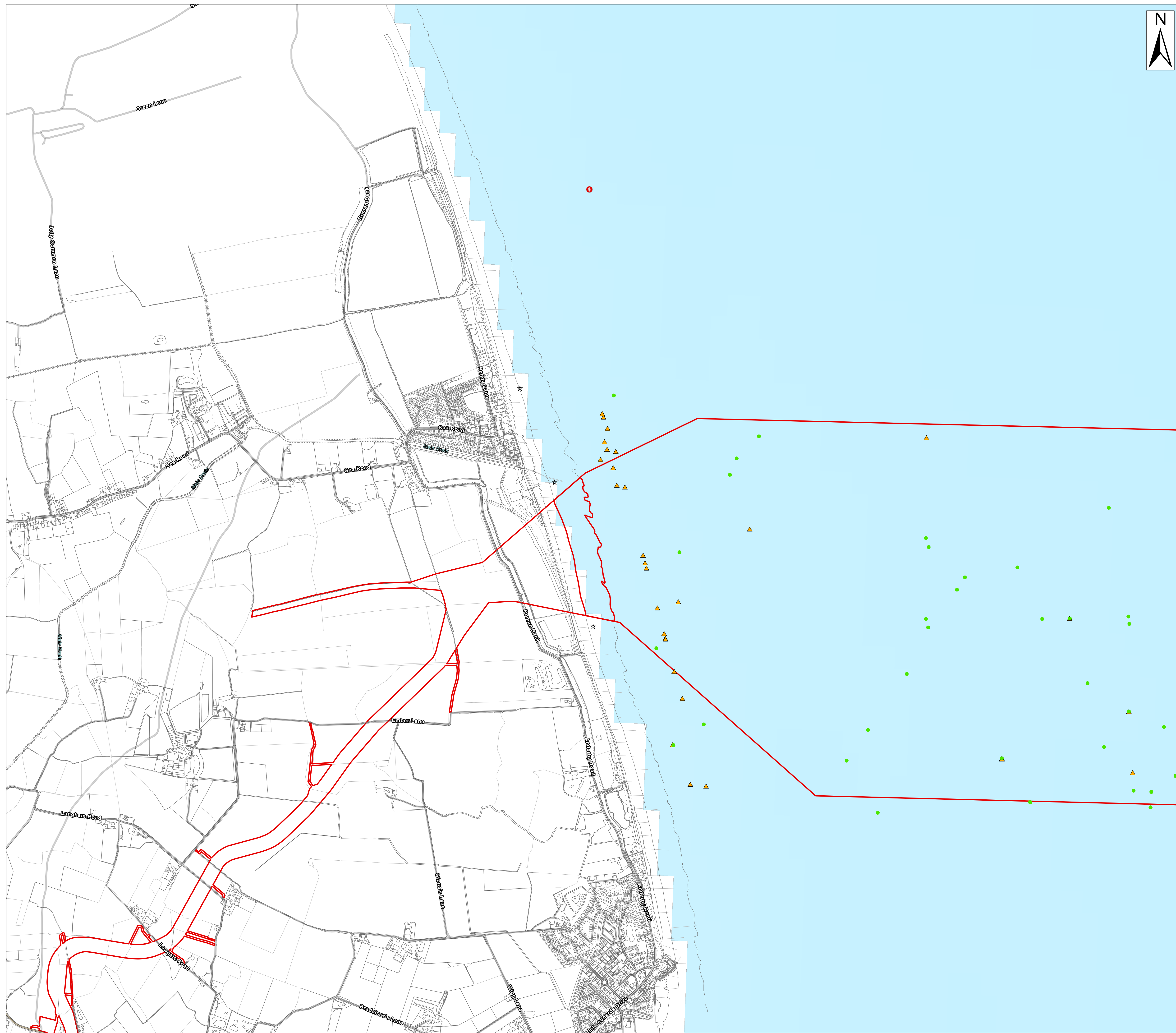
Drawing No: PP1-ODOW-DEV-CS-PLN-0024\_03

Drawing: 4 of 5      Page Size: A1

Rev No:	Date	Description	Drawn	Checked	Approved
1.0	March 2024	DCO Application Issue	GC	ODOW	ODOW
2.0	June 2024	Response to Section 51 Advice	GC	ODOW	ODOW
3.0	Sept 2024	Response to Rule 17 Letter Dated 31 July 2024	GC	ODOW	ODOW



This document may only be used for the purpose for which it was commissioned and in accordance with the terms of engagement for that commission. Unauthorised use of this document in any form whatsoever is prohibited.



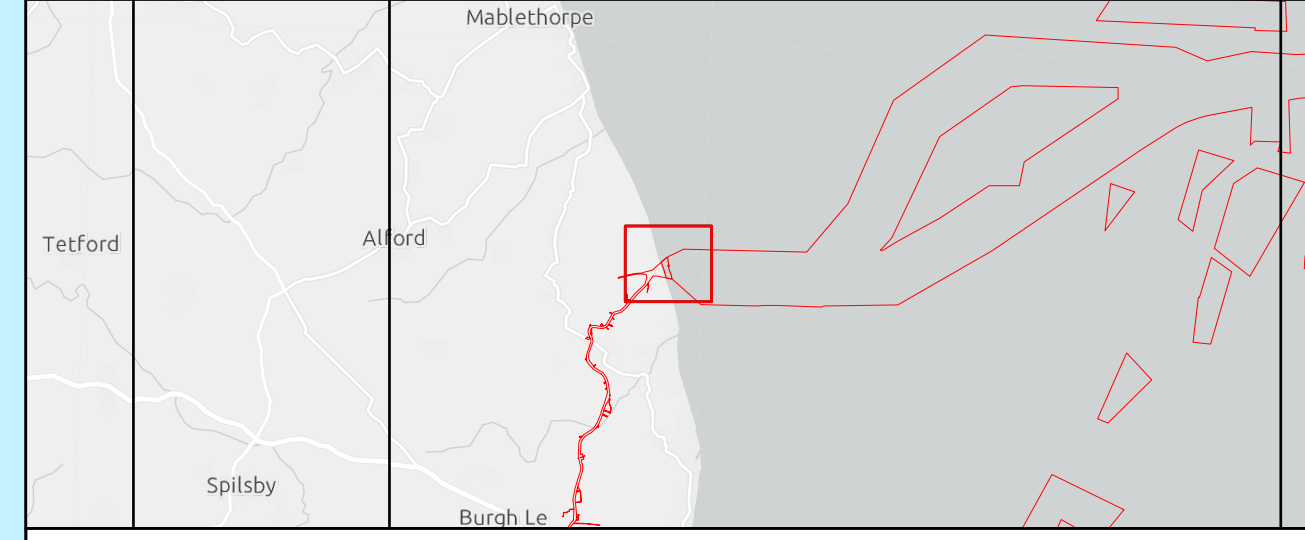
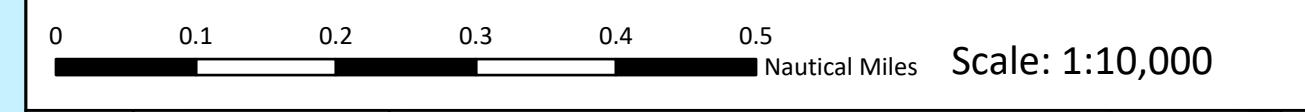
- Legend**
- Order Limits
  - Sheet Extent
- Wrecks & Obstructions (UKHO)**
- Dangerous wreck
- Archaeological Anomalies - Magnetometer**
- ▲ Medium Potential
  - Low Potential
  - ★ Find

Source:  
 Contains Esri Community Maps Contributors, Esri UK, Esri, TomTom, Garmin, Foursquare, GeoTechnologies, Inc, METI/NASA, USGS, Esri UK, Esri, TomTom, Garmin, Foursquare, METI/NASA, USGS.  
 Contains OS data @ Crown Copyright and database right 2022. All rights reserved.

Notes:

	Status: Pre-examination update
--	-----------------------------------

Offshore Coordinate System  
 Datum: WGS 1984  
 Spheroid: WGS 1984  
 Projection: UTM Zone 31N  
 Central Meridian: 3 E  
 Vertical Reference: LAT (Lowest Astronomical Tide)



**Outer Dowsing Offshore Wind**  
**2.14 - Historic Environment Plan Offshore V3**  
 DCO Application

Drawing No: PP1-ODOW-DEV-CS-PLN-0024\_03

Drawing: 5 of 5 Page Size: A1

Rev No:	Date	Description	Drawn	Checked	Approved
1.0	March 2024	DCO Application Issue	GC	ODOW	ODOW
2.0	June 2024	Response to Section 51 Advice	GC	ODOW	ODOW
3.0	Sept 2024	Response to Rule 17 Letter Dated 31 July 2024	GC	ODOW	ODOW



This document may only be used for the purpose for which it was commissioned and in accordance with the terms of engagement for that commission. Unauthorised use of this document in any form whatsoever is prohibited.